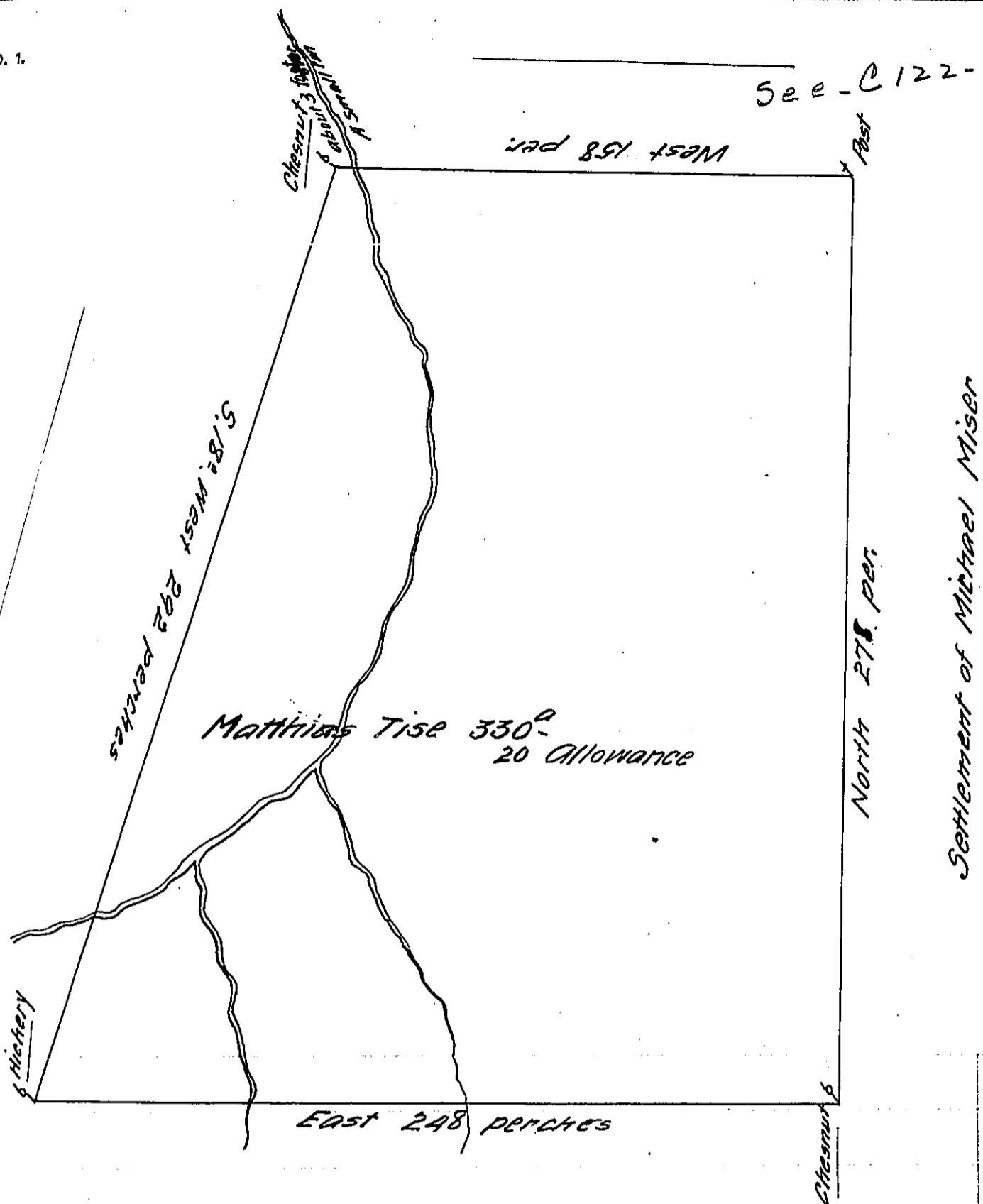


See - C 122-293



By virtue of a Warrant from the Proprietor Dated y<sup>e</sup> 12<sup>th</sup> Day of September Anno Domini 1737 - The Above Described Tract of Land was Surveyed unto Matthias Tise in the Township of Lebanon in y<sup>e</sup> County of Lancaster. Beginning at a Marked Hickery Thence East by Vacant Land 248 perches to a Chestnut Tree Thence North by the Settlement of Michael Miser 278 Perches to a post Thence West 158 perches to a Chestnut Tree. Thence South 18° West 292 perches to the place of Beginning Containing ~~Containing~~ 330 acres beside allowance for Roads. 26<sup>th</sup> of 9<sup>th</sup> 1737. P. Sam Lightfoot

IN TESTIMONY that the above is a copy of the original remaining on file in the Department of Internal Affairs of Pennsylvania, made conformably to an Act of Assembly approved the 16th day of February, 1833, I have hereunto set my Hand and caused the Seal of said Department to be affixed at Harrisburg, this twentyseventh day of September 1911.

*Henry Howell*  
Secretary of Internal Affairs.